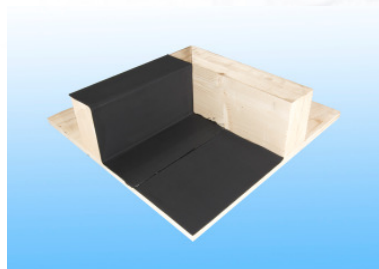
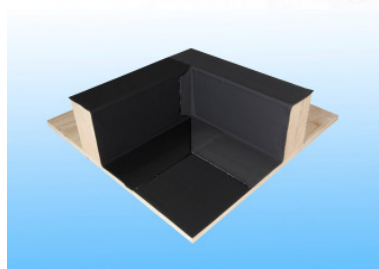


RESITRIX internal corner

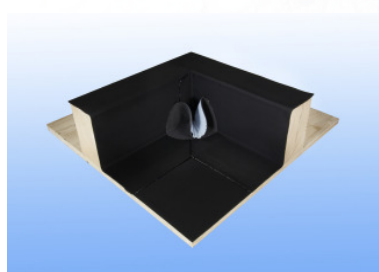
with precut corner patches: tongues, kidney patches and patches from SKW



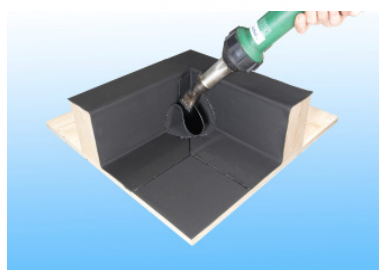
The 1st strip will be completely bonded on to the pre-treated substrate. It will run up to the corner. The strip should have an overlap of at least 10 cm onto the RESITRIX, on the flat roof. Welded overlap to be at least 4 cm.



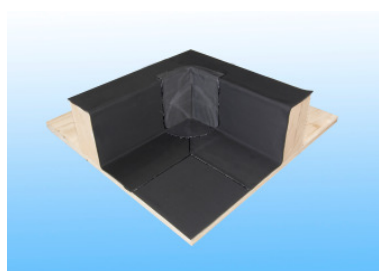
The 2nd strip will be completely bonded on to the pre-treated surface. It should run 5 cm around and past the corner onto the vertical surface. The overlap onto the roof surface should be 10 cm. All laps should be heat-welded over a width of at least 4 cm.



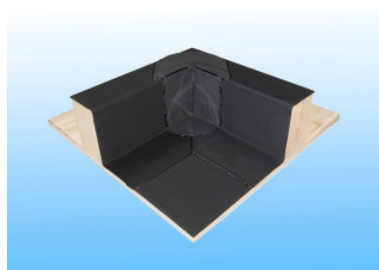
Cut the release paper on the backside of the patch 1cm off the middle. Remove the largest part of the release paper. Fold it double in a point and place it in the corner. Start welding at the lowest point, left and right. Then, weld the vertical part left and right, and finally the base.



Remove the release paper in the fold. Heat the SBS with hot air. Push the fold in the corner. Apply pressure on the fold in the corner with the roller. With a separate piece of Resitrix weld the fold up against the structure.



Cut off the rectangular part of the tongue, 2cm above the up stand. Break the reinforcement on the top, in the middle. This part should be welded onto the horizontal part of the roof edge.



Cut the remaining part of the tongue in the required shape, and weld it onto the horizontal part of the roof edge. Apply a roof trim or cap flashing according to the specification.



Branche office UK
tel: 01788-551294 / fax 01788-551714
email: info.uk@pdt-group.com
www.pdt-group.com

PDT
waterproofing

091018