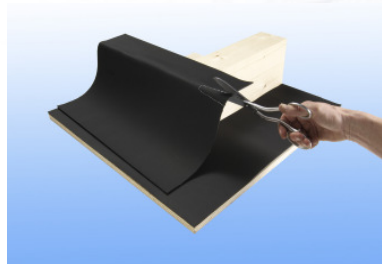


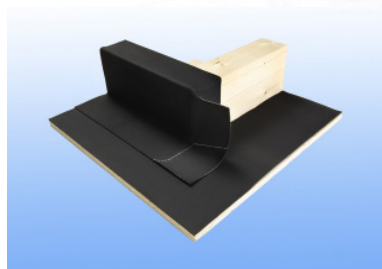
RESITRIX external corner

with pre-cut corner patches: tongues, kidney patches and patches from SKW

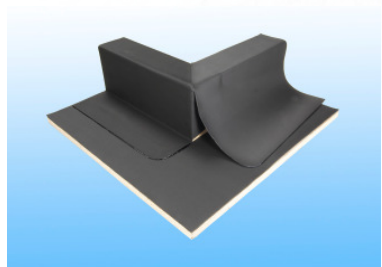


The 1st strip should be completely bonded onto the pre-treated substrate. The strip must have a overlap of at least 10 cm on to the RESITRIX, on the flat roof.

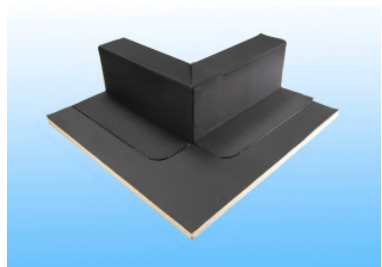
The strip will bend around the corner for 10 cm. Cut a small strip out along the fold, finishing 2 cm from the corner with a rounded cut. Break the reinforcement.



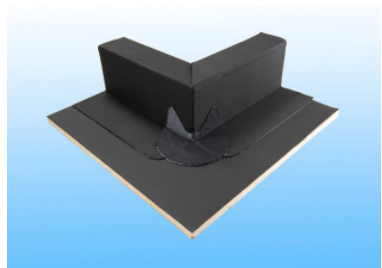
Bend the horizontal overlap down first, and stick it to the substrate. Cut the bottom corner section away, and weld the vertical flap around the corner. Heat weld the overlap.



The 2nd strip will be fully bonded to the pre-treated substrate. Cut and remove top surface overlap with a 45° cut (internal corner to external corner).



All laps should be heat-welded over a width of at least 4 cm. First weld the overlapping top surface corner. Then press the base of the vertical surfaces tide into the internal corner and weld. Next weld the overlaps.



At the lowest point apply a kidney-shaped pre-cut patch. Break the reinforcement in the cut away part. Place the kidney-part in such a position that it is standing up for 2cm. Weld the kidney-part completely to the surface. Start by welding on the folds first.



To finish it off weld a ¾ circle patch onto the horizontal part of the roof-edge. Weld the patch completely to the surface.



Branche office UK

tel: 01788-551294 / fax 01788-551714

email: info.uk@pdt-group.com

www.pdt-group.com